



UNIVERSITY
of SOPRON

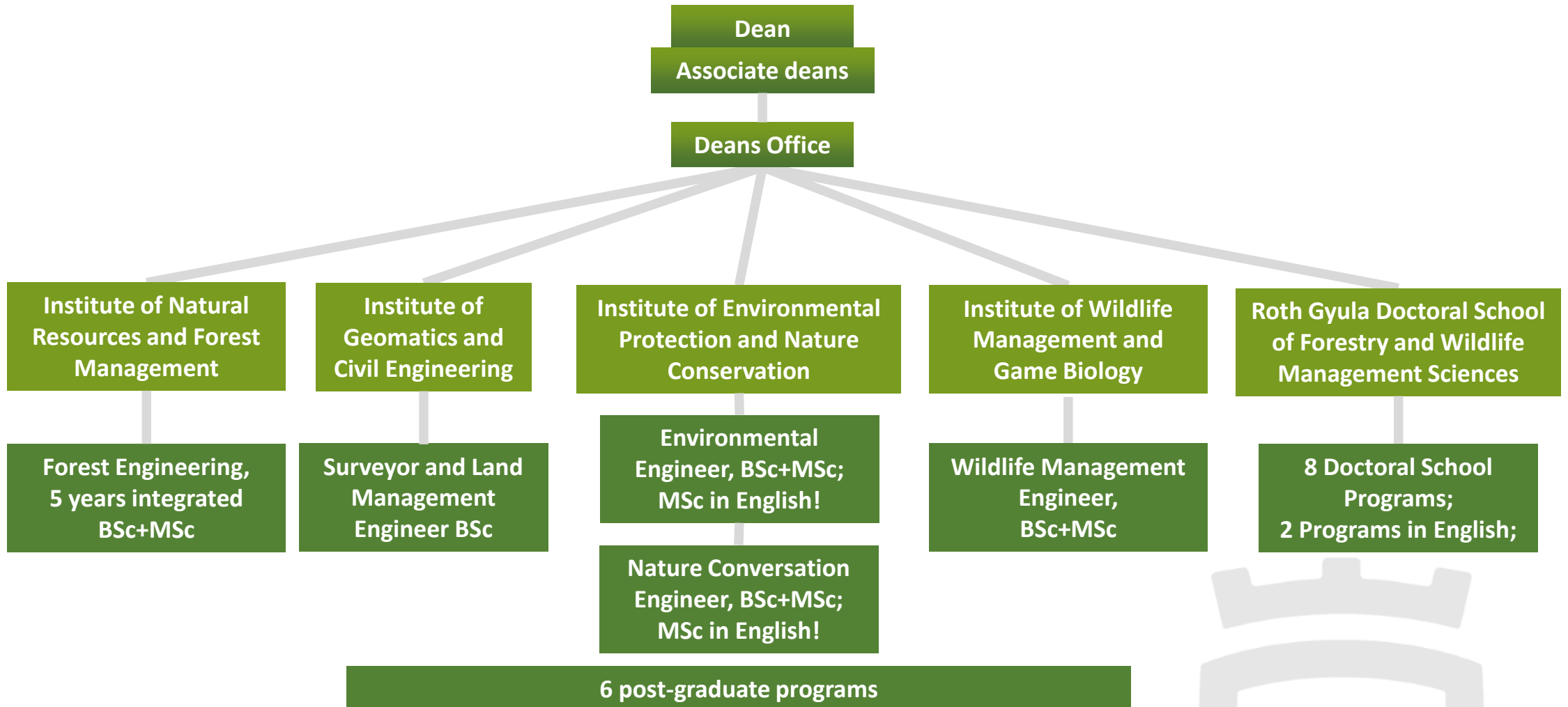
FACULTY OF
FORESTRY



University of Sopron, Faculty of Forestry Introduction



University of Sopron, Faculty of Forestry - Structure



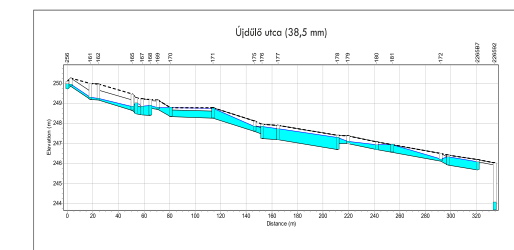
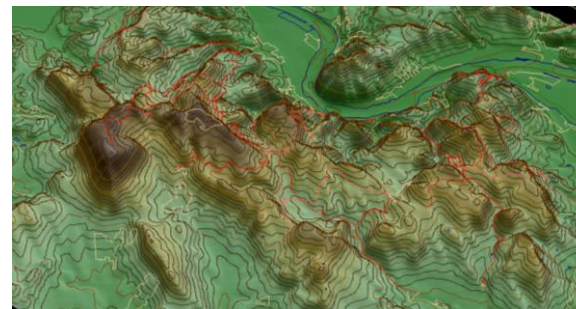
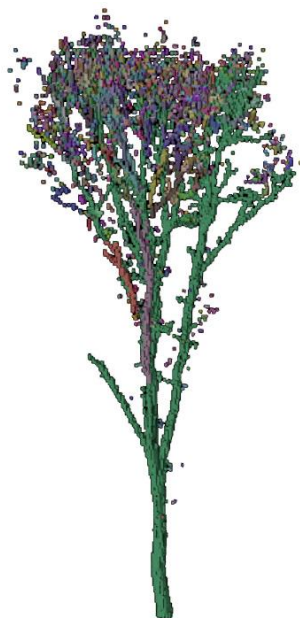
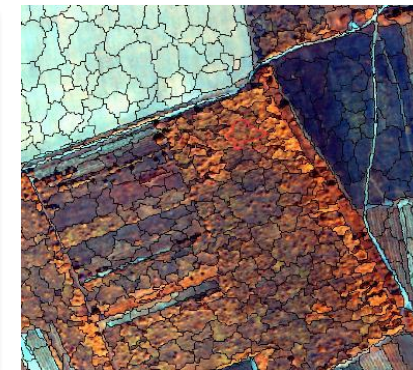
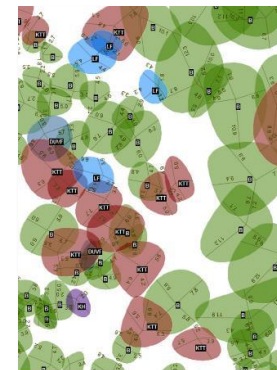
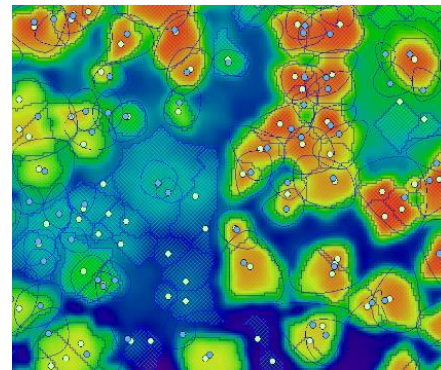
Institute of Natural Resources and Forest Management

- Utilization of forest; Mechanization
 - Investigation of forestry machinery
 - Mechanization and work systems investigation of logging and forest biomass production
- Forest Management and Mensuration
 - Forest inventory, planning of assortment composition
 - The comparison analysis of wood products' appraisal methods
 - Wood production of mixed forest stands
 - Monitoring systems
 - Non-wood forest products utilization
- Forest pedagogy
- Silviculture
 - History of forest nursery operations
 - Continuous forest cover management
- Forest & plant protection
- Pests of forest trees
 - Pathogens on trees
 - Invasive species
 - Detailed investigation of various insect groups
 - Biotic and biotic damages in urban greenings



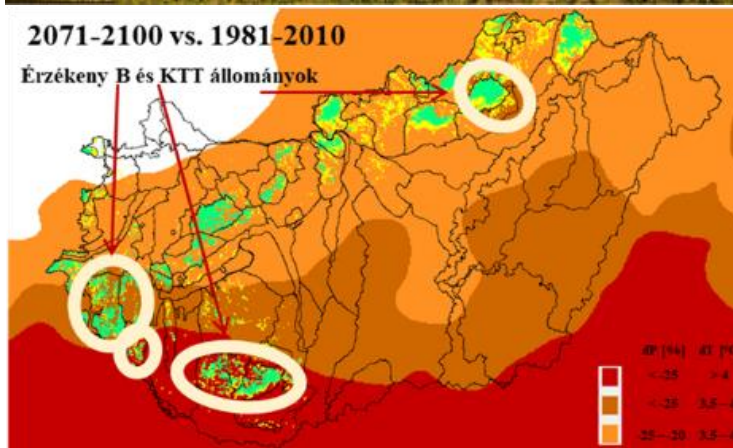
Institute of Geomatics and Civil Engineering

- Geomatics
 - GIS modeling
 - Field GIS
 - UAV photogrammetry
 - Satellite image processing
 - Laser scanning
- Forest opening up
 - Network Planning
 - Digital Road Register
 - Pavement Structure Planning
 - Road Design
- Water management
 - Small Catchment Research
 - Urban Hydrology
 - Evaporation
 - Forest-Groundwater
 - Interception Modelling
 - Treatment Wetlands



Institute of Environmental Protection and Nature Conservation

- Soil science
- Natural Resources Conservation
 - Vegetation dynamics
 - Invasion biology
 - Hungarian Flora Mapping Program
- Chemistry
 - Climate adaptation studies
- Continuous cover forestry
- Environmental management and protection
 - Waste management
 - Life cycle analysis
 - Biomass circular economy
- Investigation of agroforestry systems
 - Bee monitoring; Technology,
 - Resource and product optimization;
 - biodiversity;
 - Plant protection;
 - Carbon sequestration and GHG emissions



Institute of Wildlife Management and Game Biology

- Wildlife Management
 - Small game management
 - Hand-rearing of small game species
 - Long-time monitoring of waterfowl species
 - Long-time habitat management and monitoring
 - Big game management
 - Damages caused by big game
 - Game management and Nature conservancy
 - Fishery, Intensive Game management, Kinology
- Game biology
 - Vertebrate zoology, Ethology, Game biology
- Culture of hunting
 - Cultural history of hunting, Hunting ethics
 - Trophy measuring, Traditional hunting methods
- GPS telemetry
 - Red deer, Fallow deer, Wild geese
 - Woodcock, Golden jackal, Red fox



Further educational partners

- Forest Knowledge Center;
- Educational Forestry Ltd;
- Hungarian Forest Research Institut.

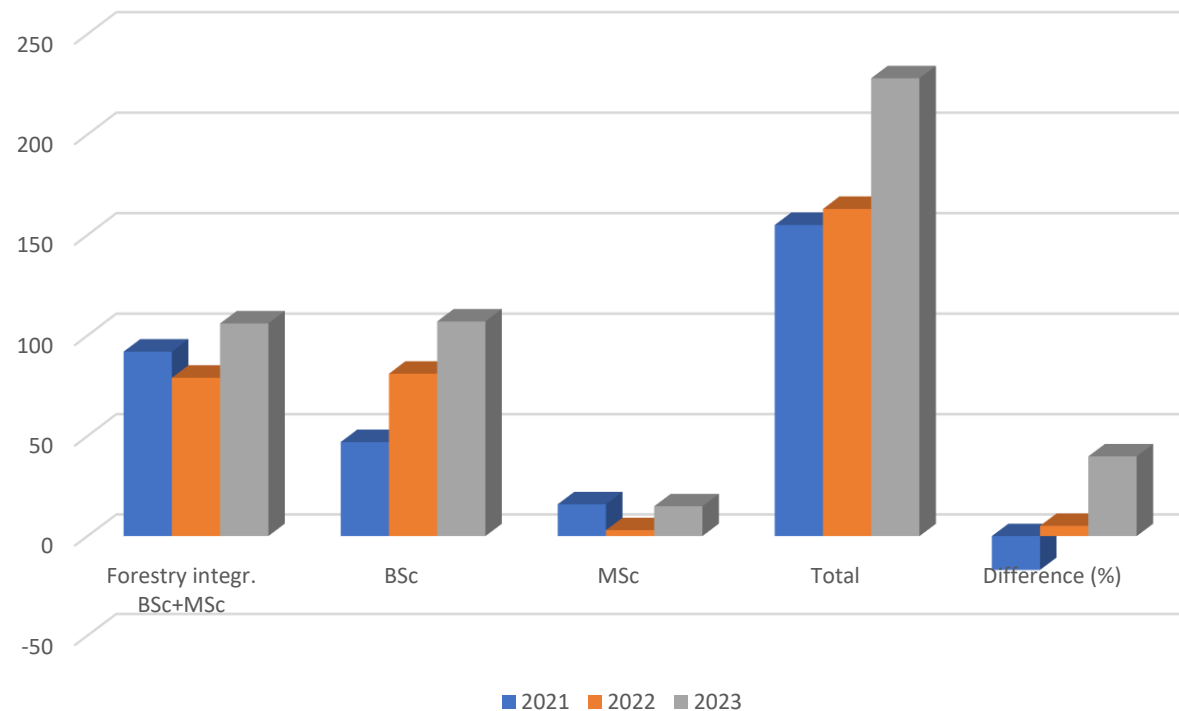


ERDÉSZETI ÁGAZATI
TUDÁSKÖZPONT



University admission applications at the Faculty of Forestry of Sopron University 2021-2023

New university admission applicants in first place for the Faculty of Forestry





SOPRONI
EGYETEM |

ERDŐMÉRNÖKI
KAR



Thanks for your attention!

